

Views onTAP.

THE SPRING ISSUE

SP / 22

FREE

VIEWS ON COMMUNITY SAFETY — 4

**Pacific Wardens Receive
Warm Welcome**

VIEWS ON TE ATATŪ PENINSULA — 6

TAPBA

Aims for Town Centre Upgrade

COMMUNITY NEWS — 13

Te Atatū Toy Library

VIEWS ON CONSERVATION — 8

**Fernbirds Gain More
Cover at Local Haunt**

TEATATUPENINSULA.CO.NZ

TEATATŪ PENINSULA TOWN CENTRE MAGAZINE

Published quarterly

Next issue: Summer

Advertising booking deadline:
November 1st, 2022

Delivered: December 1st, 2022 (approx.)

Disclaimer: Views on T.A.P. is the magazine of the Te Atatū Peninsula Business Association. Advertising statements and editorial opinions expressed in the magazine do not necessarily reflect the views of the Association or the Committee unless expressly stated. Any communication can be forwarded to the Editor at the contact details provided. The contents may not be reproduced in any form without the written permission of the Editor. No responsibility is accepted for the Author's suggestions and conclusions, or for any errors or omissions.

Contact Information:

For advertising enquiries or to submit editorial copy, email:
manager@teatatupeninsula.co.nz.

Circulation: 12,000 copies.

Delivered free to homes and businesses in Te Atatū and Glendene. Available in selected libraries, cafés, street boxes and visitor accommodation.

Published online at
www.teatatupeninsula.co.nz

Designed by *Pages Print*

Pages Design & Print Services Ltd.

Cover photo by Kent Xie.

Photo courtesy to Views on T.A.P. magazine.

Consent for other use upon request to:
motumanawa@gmail.com

Advertising Rates:

TAPBA Members:

Full page	\$644.00 plus G.S.T
½ page	\$336.00 plus G.S.T
¼ page	\$185.00 plus G.S.T
⅛ page	\$157.00 plus G.S.T

Non Members: Plus 10%



Te Atatū Peninsula Business Association Committee:

Chairperson Michelle Nuttall (West Auckland Counselling)

Treasurer Peter Hohepa: Hohepa Chartered Accountants Ltd

Committee Members

Kiseon Hong: Waitakere Foot Te Atatu Peninsula

Jackson Mulligan: Refill Nation

Dilys Davies: Te Atatu Union Church

Sean Greenshields: McDonald's Te Atatu

Helen Overington: Stitches Alterations

Town Centre Manager: Robynne Pringle

FROM THE COMMITTEE

After the recent wild weather spring has never been so welcome. We emerge optimistic for a better run up to Christmas this year with gatherings and events, and without lockdowns.

Thank you to our community, for the high rate of mask-use in shops. Some of our takeaway outlets are still serving from the door rather than inside, and it is great to see the customers support them, while Covid is still virulent. Staff absences due to sickness make it hard to keep going and anything customers can do to help the businesses get through, is much appreciated.

Two new businesses are welcomed into our retail community – read about Berlin Clothing Company and Jade Marie Lashes on pages 3 and 4. A warm welcome also, to our new Te Atatu pacific Wardens who are out and about with their hi-vis smiles. Hear about them from Auckland Council Specialist Advisor Michael Alofa, on page 4.

Yet another warm welcome goes to our new Te Atatu Community Constable Carlo de Martin, who is introduced in our Community Safety information on page 18.

You may have noticed a few cones around a couple of the big trees in Te Atatu Peninsula town centre. The trees have grown over the last few decades, pushing up the old paving and creating tripping hazards. Te Atatu Peninsula Business Association is advocating for a town centre masterplan and traffic review, aiming for an upgraded town centre that can meet the needs of our growing population. Read more on page 6.

Te Atatu Christmas Parade is planned for December 3rd and it's time to book your float!

See the Community Notices on page 10, 11 and 12 for details. There's a lot to look forward to with the change of season. Stay well, stay positive and stay shopping locally. COVID-19 has affected us all and for the most vulnerable among us, many of life's usual activities had to be put aside. Te Atatu South's Two4Nine Gallery and its resident artists are getting back into normal life and looking forward to the re-opening exhibition of their gallery. Read about their plans on page 17 •

All the best.



MIKE'S KIWI
gardening & rubbish removal.
MIKE SMITH 021 255 7401
CALL OR TEXT TODAY

- HEDGE TRIMMING
- CLEAN UPS
- WASTE REMOVAL
- WATER BLASTING
- APPLIANCE PICKUP
- FREE QUOTES

Welcome to Berlin Clothing Company

Welcome to Tom, Gloria and Kendal Halloran, clothing designers who have opened their menswear retail store in the same premises as the old Te Atatu Menswear, bringing with them a wealth of experience from the fashion industry.

Already a well established clothing manufacturer with a retail store in Orewa, the family first heard of the premises becoming available, because they supplied their designs to Te Atatu Menswear. Gloria says when owners Malcolm and Wilma first told them they were planning to close their store and retire, the family saw it as an opportunity to grow their own business and contribute to the local community.

"Our family is born and bred in West Auckland. All our designs are done in our west Auckland home, and it only seemed fitting that we have a retail business a little closer to home," says Gloria.

Tom and his old business partner Evan McNeil, originally set up Berlin Clothing Company as a premium menswear manufacturer, with their first store opening in 2017 in Orewa.

When Evan retired, Tom decided to turn his

company into a family business, and bring in wife Gloria and daughter Kendal. Gloria having previous experience in retail and accounts took over the admin side of the business, and Kendal made the easy switch from ladies wear to menswear, having previously worked for several different New Zealand fashion companies. Just months after taking over the business, they were dealing with lockdowns and the covid pandemic.

"Not being able to travel has affected our business in a huge way," says Tom.

"For the last two and half years all our fabrics and designs have had to be communicated through email, from selecting the fit to the fabric composition and design. Not to mention that both the wholesale and retail side of the business came to a complete stop during all of Auckland's lockdowns. Orders were cancelled and stock shipments were delayed, but in spite of all this we have managed to keep going and growing our business."

Tom says the 'Berlin' name comes from the German capital city and inspired their brand to represent the urban casual feel that the city has, by mixing old vintage pieces with new designs. He says the brand is known for quality fabrics, diverse colours, unique designs and their signature contrasting collars and sleeve cuffs.

The brand is available in menswear stores in New Zealand, selected stores in Australia and the two Berlin clothing stores in Orewa, and now Te Atatu Peninsula. •



▲ Gloria, Tom and Kendal Halloran

BERLIN CLOTHING

Support LOCAL Businesses

Opening hours
Monday-Friday 9am-5pm
Saturday 10am-2pm

Address
548 Te Atatū Road
Te Atatū Peninsula, Auckland

Contact Us For Inquiries
Tel: 09 834 6470
E: shop@berlinclothing.co.nz

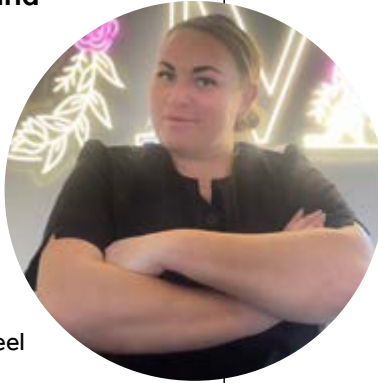
Welcome to Jayde Marie Lashes

After two years in the eyelash extensions industry Jayde Winter has taken the leap and opened her own lash salon at 4/556 Te Atatu Road, down the corridor between Noodle Canteen and G4U.

Jayde was born and raised in Te Atatu and is now raising a family of her own here, with three children aged nine, four and eight months. She says lash extensions are on trend and there is a set of lashes out there for everyone, from a natural look to an extreme look.

"Eyelash extensions enhance your eyes and make you look and feel beautiful," says Jayde. The eyelash extensions last anywhere between two and eight weeks, depending on the life of your natural lashes, as they fall out and regrow.

Jayde says lash extensions are for everybody of all ages, and she prides herself on making clients look and feel great. •



▲ Jayde Winter

Pacific Wardens Te Atatu volunteers receive warm welcome

By Michael Alofa
(Specialist Advisor, Auckland Council)

Nga mihi nui koutou katoa, Talofa lava and warm Pacific greetings to you all.

Our new Pacific Warden Te Atatu volunteers have taken to the street in numbers recently. In their impressive bright yellow fluoro coloured uniforms, accompanied by the local Police and Auckland Council members, the wardens received positive warm responses, smiles, laughter and welcomes as they patrolled the Te Atatu town centre in pairs.

They stopped every passer-by during their walk using their contagious Pacific smiles to say hello, giving locals an excuse to stop and return the friendly gesture. The wardens also visited local Te Atatu Peninsula businesses handing out an introductory flyer and making small conversations. This old Kiwiana friendly hello, is a breath of fresh air and it is so reassuring not only to see the wardens out and about

RayWhite

Have you outgrown your nest?
Call us today and beat the
Spring rush!

Ray White Te Atatu, 1 Rhone Ave, te Atatu Peninsula
Licensed REA2008

Email: teatatu.nz@raywhite.com
Phone: 09 834 6789

across our town centre, but also having someone in the safety yellow uniform stop and engage, is just wonderful.

This community project was made possible through the support and partnership of Auckland Council, Waitemata-West Police, and the Henderson-Massey Local Board.

The development of this community initiative started back in 2019, and was delayed by the arrival of COVID-19, and I would like to acknowledge the perseverance and support of the Council and its strategic partners which got us to where we are today.

The warden volunteers are affiliated to the Samoan congregation, who are part of the Te Atatu Catholic Church on Taikata Road. Although the group has been around for many years and have engaged in other local church related community initiatives, we welcome them as the first Pacific Wardens Te Atatu group. The volunteers mostly hold full time employment, and their warden duties and deployments are made in their spare time, acting as the eyes and ears of the Police and Council.

The Pacific wardens are not new across Tamaki Makaurau, but certainly new in the Te Atatu area. Out west, we also have Pacific wardens in Glen Eden, Whau and Henderson. Each Pacific warden group works closely with local Police and Council. They act as ambassadors of the local community and provide a soft approach to some of our social and community safety issues reported. Their role primarily is

engaging with the local community, providing visibility and reassurance and reporting issues where appropriate.

The wardens will be visible throughout the upcoming summer period supporting our many public events including Police safety campaigns.

Please welcome our new group of volunteers across our town centre with a simple 'hello', as they embark on serving our local Te Atatu Peninsula businesses and the wider community!●



Membership is easy. You can join

We are Te Atatu and we are here for you

Friendly Environment

Have your own function, no charge - this is your club

JOIN LIFE AT

Tournaments throughout the country

**Games at no cost.
Darts
Pool
Snooker
Why pay \$2 a game?**



Communities within Communities

Food glorious food!

Sport on the Big Screen

Thursday & Friday courtesy vehicle pick up & drop off

Catering to your needs

Entertainment

**Club Member Benefits
Insurances
Banking**

**Contact
office@teatatura.co.nz
834 -3698**

“Be assured that we will keep pushing for an ideal, long term solution.”



Te Atatu Peninsula town centre

TAPBA Aims for Town Centre Upgrade

New housing and a rapidly growing population have increased pressure on Te Atatu Peninsula’s aging town centre infrastructure. Last refurbished several decades ago, the streetscape is at the end of its life.

Te Atatu Peninsula Business Association (TAPBA) Chairperson, Michelle Nuttall says the organisation has tried to push for an upgrade over the last ten years, without success. Now with incidents of pedestrians tripping and falling and areas of the town centre coned off since the end of last summer, TAPBA wants to reassure locals that the organisation is aware and continues to push for progress.

Following the amalgamation of Councils across Auckland when the Unitary Plan was being finalised, TAPBA attempted to get a comprehensive Te Atatu Peninsula Town Centre Concept Plan that had been developed by the then Waitakere City Council, moved across into the Unitary Plan. This was unsuccessful. Following that, TAPBA submitted to Council’s Long Term and Annual Plans, asking first for an upgrade, and then for commitment to developing a new concept plan, or what would be a first step toward the end goal. More recently TAPBA has asked that there be a traffic and transport review carried out and a masterplan for development within



Providing residential and light commercial plumbing and gas services to Te Atatu Peninsula and Te Atatu South in a timely and affordable manner.

Including but not limited to inspections, maintenance, repairs, new builds and renovations. A service customers will use again!

Contact Mike Miller,
Certifying Plumber and Gas Fitter
Mobile +64 21 1372810

www.absolutepg.co.nz

the town centre. Their last submission was backed by several commercial property owners and local M.P. Phil Twyford.

“We feel that with one road on and one road off the Peninsula, and traffic already backed up a couple of times a day during the week, that we need an overall look at what we can do to ease that congestion,” says Michelle.

“Given that our population is increasing, and more pressure is being put on our public areas, we need to consider the future, and when we do manage to secure a streetscape upgrade it will need to allow our residents and visitors to move around easily and safely while they live, work and play.”

The Association has met with Auckland Transport representatives in a recent walking inspection of key areas, and in the short term there will be some repairs made. Michelle says the trees planted along the main road in the town centre have outgrown original paving underneath them, with roots dislodging bricks and pavers, creating tripping hazards and an unsightly appearance. Michelle says although the repairs will be a quick and temporary fix, they are necessary to keep pedestrians safe.

“Be assured that we will keep pushing for an ideal, long term solution,” she says.

As issues arise, the Association and the local businesses regularly log repair jobs with Auckland Council. If the public sees something that needs repairing or is a health and safety risk, they can email manager@teatatu Peninsula.co.nz, with the details. •



Aging streetscape

Meet your Te Atatu sales professionals



Leonie Higgins
Branch Manager
021 983 332



Qiao Liu
021 850 665



Cherry Ning
021 809 080



Lisa Nielson & Mark Boyd
021 558 764 | 021 2444 774



Narender Kumar
021 326 880



Julie Hey
021 356 021



Kevin Meng
022 1353 847



Angie Gray
027 292 8337



Jay Suchak
022 027 9909



Mickey Byun
021 992 453



Enock Gandam
021 034 2949



Shanthi Radha Krishnan
021 163 9095



Stella Shao
021 037 4015



Lu Lu
021 221 2069



Mandy Li-Geraghty
021 892 088



Joanna Xu
021 568 899



Harry Yu
021 420 916

For a free, no-obligation appraisal of your home, **get in touch today.**

Te Atatu

09 834 3570 | 534 Te Atatu Road | teatatu@barfoot.co.nz

barfoot.co.nz/te-atatu

BARFOOT & THOMPSON
LICENSED REALTOR

Fernbirds gain more cover at their local haunt

Story Michael Coote, photos by Kent Xie



The fernbirds eventually get to enjoy more potential canopy that is suited to their needs.

Harbourview-Orangihina Park's endangered fernbirds were gifted another round of "fernbird-friendly" native restoration planting at the end of July.

Winter is the best time to get plants in at the park while the ground is wet enough for roots to become established before the stressful summer dry spell hits. A trusty band of enthusiastic community volunteers led by Friends of Harbourview and affiliated Motu Manawa – Pollen Island Restoration Group and assisted by Auckland Council staff and contractors, together added another 650 native plants to the revegetation site one Saturday morning.

The planting zone is within a large triangle of sloping land that has been progressively cleared of gorse and pampas between the gravel pathway that heads up to the stream overbridge from the Harbour View Beach Reserve and the pukeko swampland below. Known as "Fernbird 2", the site has been worked on for a number of years running by Auckland Council and community volunteers under the guidance of Friends of Harbourview.

The aim is to get rid of all the exotic pest plants and replace them with types of native vegetation that the park's rare endemic fernbirds inhabit in the extensive wetlands nearby. Particular emphasis is placed on using kinds of native plant species that insectivorous, ground-nesting fernbirds already feed and breed in within the vast marshy lower terrace wilderness that constitutes so much of the parkland. That way the fernbirds eventually get to enjoy more potential canopy that is suited to their needs.

One of these "fernbird-friendly" native shrub species utilized in the replantings is the coastal tree daisy, *Olearia solandri*. New Zealand has a lot of strange native trees and shrubs that have evolved from small ancestral herbs. Hebes are one example, having emerged from creeping veronicas. Olearias are another, being shrub-and-tree-sized groundsels. As its common name suggests, the coastal tree daisy is adapted to live around or close to sea edges and can tolerate salty and windswept conditions.

Once much more extensive throughout Auckland's coastlines than it is today, *Olearia solandri* still has natural strongholds in Harbourview-Orangihina Park and out on the nearby Pollen and Traherne Islands. The species gets included in every "fernbird-friendly" community volunteer planting organized by Friends of

CASSIDY
EYECARE
TE ATATU • NEW LYNN

- Eye Examinations
- High Quality Eyecare & Eyewear
- FREE glasses for kids*
*conditions apply

www.cassidyeyecare.co.nz

Te Atatu: (09) 834 9070
84 Gunner Drive

New Lynn: (09) 827 2149
3080 Great North Road

Harbourview. Fernbirds perch atop mature coastal tree daisies in order to view what is going on in their surroundings.

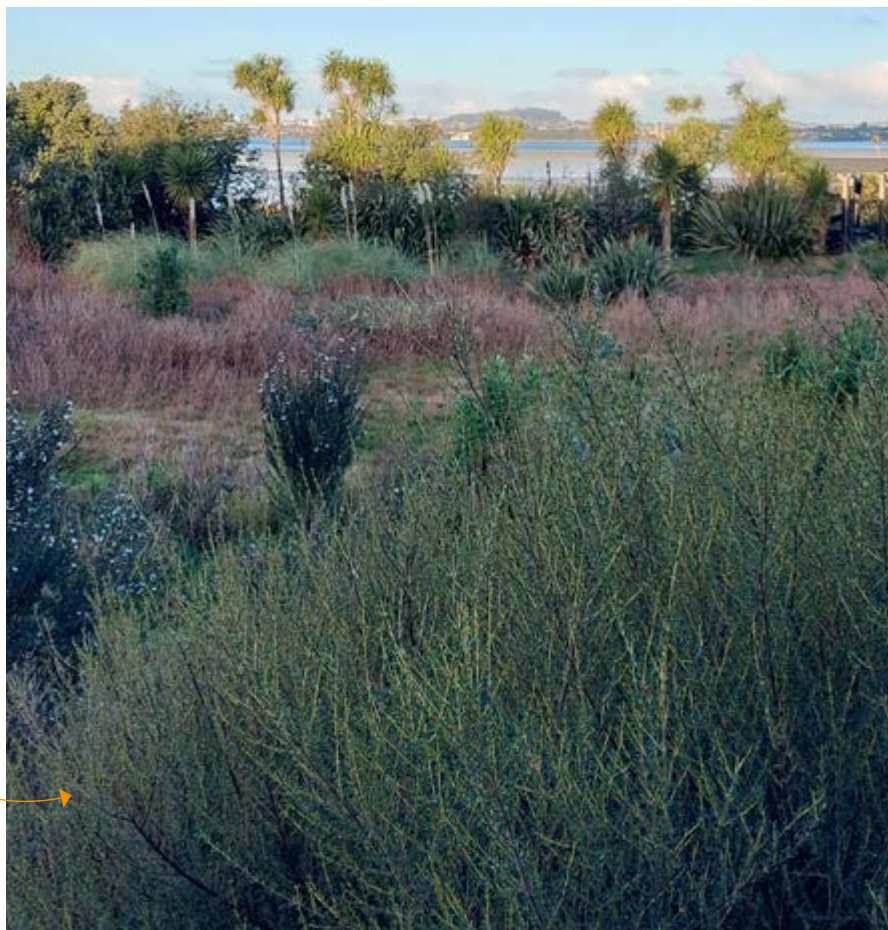
At Fernbird 2, *Olearia solandri* has proven a very successful addition to the local native flora. The plants are healthy and vigorous with high survival rates.

They can be recognized by their dense, thin, bright yellow, small-leaved branches. The tree has tiny white groundsel-type blooms which are very numerous and vanilla-scented. Seedheads are cinnamon brown and fluffy, with seeds wind-dispersed as is typical of daisies.

The growing canopy of coastal tree daisies at Fernbird 2 is kept under the watchful eye of the fernbird sculpted into the adjacent public toilet building.

A true long-time local, *Olearia solandri* deserves wider ornamental planting in Te Atatu Peninsula's gardens. •

The coastal tree daisy is adapted to live around or close to sea edges and can tolerate salty and windswept conditions



Photos are indicative

Don't miss the opportunity to secure the apartment plan of your choice now, set to be completed later this year!

- Two and three-bedroom layouts available
- Architecturally designed low-rise apartments offering modern interiors
- Conveniently located on Lincoln Road with everything on your doorstep.

To view plans call Craig on 0800 545 652 or Rochelle on 0800 545 653

MIRIAM CORBAN RETIREMENT VILLAGE

Sales office and temporary village access via Te Wānanga o Aotearoa, 207 Lincoln Road, Henderson

rymanhealthcare.co.nz



COMIC BOOK MONTH



COSTUMED CHARACTERS

**SATURDAY
24TH OF
SEPTEMBER
10AM TO 1PM**

FREE!



Free photo kiosk
TAKE PICTURES WITH CHARACTERS OR WITH YOUR FAMILY

Come in costume for extra awesome photos!

**24
09
22**

Happening in the library, with our library superworkers!



595 Te Atatū Road,
Te Atatū Peninsula,
Auckland



Auckland Council Libraries
Henderson-Massey Local Board

PRESCHOOL PROGRAMMES IN THE LIBRARY:

Wā kōreo paki, wā waiata – Stories and songs for tamariki with Whaea Keri
Te Atatu Peninsula Library
Tuesday 13 September 10.30 – 11am
Join Whaea Keri and celebrate Te Wiki o te Reo Māori – Māori Language Week with this fun session of stories and songs. All welcome.

October School Holidays – UnBelievable
1 – 16 October
Check out the library and Hub facebook pages for details of our free events and activities.

Mr Yipadee Storytime
12 October - time to be confirmed – check our facebook page closer to the date for correct time
We're so excited to have best-selling kiwi children's author and musician, Deano, aka Mr Yipadee, reading his hilarious books in the library during the holidays. His well-known books include, Jingle Bells, Rudolph Smells, Nee Naw The Little Fire Engine and Stinkosaurus. It's sure to be a fun session.
i o Matariki / The Children of Matariki.



Auckland Council Libraries
Nga Pataka Kōrero o Tāmaki Makaurau



3rd DEC

9AM - 2PM

TE ATATU PENINSULA CHRISTMAS PARADE & FUN DAY



FOOD STALLS



CHRISTMAS MARKET



FREE KIDS RIDES



PARADE AT 11 AM



FUN FOR ALL



LIVE ENTERTAINMENT







FREE WORKSHOP



CV REFRESH CLINIC

NEED HELP WITH YOUR CV?

WEDNESDAYS 1-3 PM
3 AUG, 17 AUG, 31 AUG, 14 SEP, 28 SEP

CONTACT: CV.REFRESH@OUTLOOK.CO.NZ
HALF HOUR APPOINTMENTS AVAILABLE

TE ATATŪ PENINSULA COMMUNITY HUB



Auckland Council Libraries
Nga Pataka Kōrero o Tāmaki Makaurau

**TE ATATU
FLORAL AND GARDEN CIRCLE**

Third Tuesday of the month
(February to November)
from 7.30pm
Te Atatu Bible Chapel
Cnr Waipani and Beach Roads,
Te Atatu Peninsula

Visitors welcome - \$2 at the door

Our aim each month is to have either a floral demonstrator or an experienced garden speaker

For more club information please email
teatatufloralandgardencircle@gmail.com

Pasifika Beatz

Fun beatz for kids under 5 years.

Every last Thursday of each month
9.30am - 10am

All welcome.

Te Atatū Peninsula Library

28 July
25 August
29 September
27 October
24 November

Collaboration with

Auckland Council Libraries

Come join our village

It takes a village to raise a child
In the first 1000 days we make the difference of a lifetime

Cooking, Computing, DIY, Art, Free ESOL and 100's of other Adult classes

Our Adult Education programme at Rutherford College offers both night time classes and weekend workshops. This year there are over 120 classes to choose from, so come and join us.

This term we are running Language and Cultural Workshops in September and there is a wide range to choose from such as Spanish, Korean, Chinese, Te Reo Maori, Cook Island Maori, Samoan, NZ Sign and ESOL. If you are interested in registering for these one-day workshops, head to the website below.



If you are looking for a bit of 'me' time take the opportunity to express yourselves creatively or if you need to up-skill for work or a new career, there are plenty of business and computer courses available - and you will find that learning is easy in the relaxed social atmosphere of Community Education

Call us - 09 834 4099
or email - commed@rutherford.school.nz
Adult and Community Education Rutherford College
834 4099 www.rutherfordcomed.co.nz






Rutherford College

Tohea - To strive for personal excellence



Beamafilm Film Club - Runaway Millionaires

Te Atatū Peninsula Library – Thu 15 Sep – 3.00pm - 5pm

Watch and discuss great films for free at your library. Screenings and special features courtesy of Beamafilm.

Can't make it on the day? Ask about Beamafilm's free video-on-demand for library members.

Runaway Millionaires – The Movie 2019 / 126 mins / New Zealand / M

An enthralling tale of temptation and adventure, Runaway Millionaires tells the gripping true story of petrol station owner Leo Gao and his girlfriend Kara Hurring - an ordinary New Zealand couple who, along with Kara's six-year-old daughter, find themselves on the run after an extraordinary sum of money is deposited into their account in error. In 2009, as New Zealand struggled to find its way through the global recession, the young couple fast-tracked their way out of financial strife, fleeing New Zealand for a new life in China and taking with them millions in stolen money.

Find out more
auckland@beamafilm.govt.nz 01 377 0209
[@beamafilmnz](https://www.facebook.com/beamafilmnz) [@beamafilm_nz](https://www.instagram.com/beamafilm_nz)

Auckland Council
 Libraries
 Ngā Pūkaki Kōwhiri a Tāmaki-Māhuru

Te Atatu Matariki 2022 Celebrations

From the Te Atatu Marae Coalition Trust Board

The Te Atatu Marae Coalition Trust Board (TMCTB) celebrated Matariki 2022 with a month of performance, workshops, and gatherings beginning with raising the nine Matariki flags on June 23rd.

The Matariki star constellation signifies the start of Māori New Year, and the flags correspond to the nine stars - Matariki, Tupuārangi, Waipuna-ā-Rangi, Waiti, Tupuānuku, Ururangi, Waitā, Pōhutukawa and Hiwa-i-te-Rangi. Te Atatu Peninsula and Te Atatu South schools contributed to the design of the flags, and various aspects were taken from all the students' artwork, to be incorporated into the flags, which flew high on Harbourview-Orangihina during of the month long event.

This was followed by a Dawn Blessing on Saturday June 25th at Harbourview-Orangihina, with Minister Kelvin Davis and local Councillors attending. Rangatahi Kapa Haka Kotuku Marae performed during the blessing, and the guests were served breakfast. The same day, a Kuia and Kaumatua High Tea at 1pm was enjoyed at the Te Atatu Peninsula Community Centre, by sixty elders who sat down to performance and waiata.

A selection of workshops and seminars commenced over the month including a Te Reo Māori Yoga Class, a healing Rongoā Māori balm workshop, and a DIY Bokashi Bin workshop with tips to make food dollars stretch further. Throughout the month, a Zoom hui was provided for those wishing to participate remotely.



▲ From left The nine Matariki flags, celebration cake, Whaea Yvonne Edwards, & Whaea Lynette Sydney at the High Tea

The celebration showcased the expertise and knowledge the TMCTB wants to share, to unlock cultural practices and further strengthen and nurture initiatives that build strong ties and connectedness. TMCTB worked in collaboration with the Te Atatu Peninsula Community Centre, for many of the activities and the Board secured a grant from Te Puni Kokiri, to cover media, technology, and marketing for the celebration.

We are most grateful for this grant which allowed our Te Atatu Marae Whanau Roopu to implement programs both face to face and using technology, to celebrate our beliefs, spirituality, whakawhanaungatanga, matauranga, and manaakitanga.

Raymond Hall, TMCTB Chair ●

Te Atatu Toy Library

By Karen Lohead

Te Atatu Toy Library is a place where parents or carers can go to borrow a large variety of quality toys, puzzles and games on a regular basis. It's basically like having a library of toys where you can just grab whatever you like, play with them and then bring them back and start over. It's like Christmas every two weeks.

Toys are the tools of play that help children develop their social awareness, imagination, visual motor capabilities and thinking processes. Play is a very serious activity for children and often represents a primary and valuable means of learning. Quality toys can be expensive, children quickly become bored with a toy once its play value has been exhausted. By providing new play materials every week or two, parents can save money and significantly contribute towards the development and education of their children. In an age of low waste intentions and limited budgets, it's a way to reduce landfill waste from discarded toys and packaging.

Te Atatu Toy Library does have some essential characteristics. These are we provide quality educational items for loan. It is not expensive to join (an annual subscription is charged and small fee for each toy on loan). We have a range of items covering all stages of growth and development. We provide an opportunity to

meet other caregivers to share concerns and make new friends. Our well known Librarian Terri Palmer has been with the Toy library since it opened in April 2001. She is a local personality that has seen many families through the pre school ages of their children.

Our toy library is a safe haven for caregivers and children alike.

Come for a visit and see for yourself this incredible service in our community.

Situated on Beach Road in The Chapel we are open on Tue: 12:30 pm - 2:30 pm Tue: 5:00 pm - 7:00 pm. Fri: 9:30 am - 12:30 pm

Contacts: teatatu.toylibrary@gmail.com

Follow us on our Facebook Page



We provide an opportunity to meet other caregivers to share concerns and make new friends.



Need a Sparky? Call Your Local

Family owned and operated, Allworkz is a dynamic team of residential and commercial electrical specialists. Based right here in **Te Atatu Peninsula**, supported and trusted by locals for over 9 years.

Contact Ryan today for FREE QUOTE or no obligation chat.

021 519 225 | 0508 ALLWORKZ

ryan@allworkzelectrical.co.nz | 4 Holman Road, Te Atatu Peninsula

www.allworkzelectrical.co.nz



www.facebook.com/

TE ATATU Engraving & Gifts

Trophies & Cups, Watch Services, Gifts & Cards

Etching glass and crystal.
New cups, trophies, awards, medals, pet tags, pet collars and leads.

KEY CUTTING SERVICE.

WATCH SERVICES AVAILABLE

- Watch & Remote battery replacement
- pressure testing
- link addition and removal
- buckle and wristband replacement

562 Te Atatu Road,
Te Atatu Peninsula Ph: 834 6143
Hours: Mon-Fri 9am-6pm • Sat 9am-4pm
Email: info@teatatuengraving.co.nz
www.teatatuengraving.co.nz



Bottomless BRUNCH

Saturday's we go bottomless!

Join us from 11:30am until 2:30pm for a main meal and 90 minutes of bottomless prosecco or mimosas for **\$49** per person.

Book ahead for your session time, or take the offer up on the day, it's up to you!

*Conditions apply

TUESDAY

7pm

QUIZ NIGHT

with

BELIEVE IT OR NOT QUIZ EVENTS
THE BEST GENERAL KNOWLEDGE QUIZ IN THE
WHOLE WORLD!

*Conditions apply



BOOK YOUR *Function* WITH US TODAY

We provide so much more than just a function room for hire. Featuring warm, versatile spaces, attentive service and seasonal menus, Mr Illingsworth is one of the best in the west!

*Conditions apply



friday WIND-UP

WITH RONNIE BIGGZ & DJ BUS
FROM 4:30PM

*Conditions apply

MR. ILLINGSWORTH



FOOD + DRINK

571 TE ATATU ROAD, TE ATATU PENINSULA
MRILLINGSWORTH.CO.NZ | 09 953 4377

Church Community Garden Needs Kai Stand

The community vegetable garden at Te Atatu Union Church is thriving and locals have been helping themselves to a range of fresh veges and herbs. Now the Church would like a Pātaka Kai to display and offer the produce and hopes that someone in the community can help.

Union Church Senior Elder, Dilys Davies says the Church embarked on the project because vegetables have become so expensive that they are out of the reach of some families. Thanks to funding from the Methodist Church, a landscaping company was engaged to convert old flower gardens, prepare the soil, and plant the vegetables and herbs. Through a donation from the Henderson Massey Local Board 'Love your Neighbourhood' Grants they were able to purchase a garden shed.

The garden is flourishing with winter vegetables like kale, cabbages, broccoli, cauliflower as well as celery, lettuces and herbs such as coriander.

The Church is now calling for a volunteer builder or handyman with some carpentry knowledge, and if possible, a donation of timber so that a vegetable stand can be made for the produce.

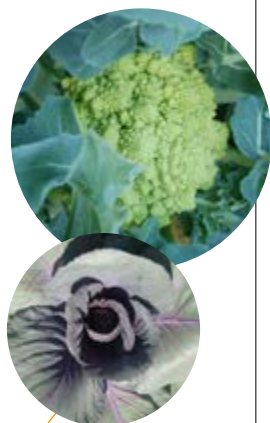
Dilys says not only the vegetables and herbs from the garden could go in there, but also donations of surplus fruit and vegetables from local gardens.

"We often get grapefruit and other citrus being donated to our Op Shop," she says. "It could all go into the kai stand."

New vegetables will need to be planted regularly, and any donations of seedlings would also be gratefully received.

The Church would like to thank the volunteers who have helped plant and weed the garden, particularly Lucia Perera and Jacqui Berry, who have regularly put in hours of work.

To volunteer timber, seedlings, building or gardening skills, please email: tatunion@outlook.com •



VIEWS ON FOOD

Eating seasonal vegetables is the only way to go in spring. Out of season summer vegetables like lettuce and tomatoes are expensive, and we still need a salad now and then. Versatile spring brassicas like the ones in the Te Atatu Union Church community garden, are perfect to use. Here are a couple of salads to try.

Orange and Red Onion Slaw

For a fresh take on traditional coleslaw, try adding citrus.

You will need:

Half a small cabbage, finely shredded
 Half a red onion, finely sliced and chopped
 One orange, peeled and sliced into slivers
 One or two celery sticks, thinly sliced
 Half a red or yellow capsicum finely sliced (optional)
 Parsley, finely chopped

Mix the slaw ingredients together in a large bowl.

For the dressing:

3/4 cup of good quality mayonnaise
 One rounded teaspoon of grainy mustard
 1 tbsp Lemon juice
 1 tsp maple syrup (optional)

Mix the dressing and add to the slaw carefully, one tablespoon at a time until the vegetables are nicely coated but not soggy. Season with ground black pepper and mix. Transfer to a clean bowl for serving.



Raw Broccoli Salad

This is a great make ahead option for a special occasion or get together.

You will need:

1 head of broccoli
 2 stalks celery
 4 rashers bacon
 1/2 cup diced cashews
 1 tbsp diced dried cranberries
 1/2 red onion
 1 cup mayonnaise
 1 tsp grainy mustard
 1 tbsp white vinegar
 salt, pepper, pinch of sugar or sweetener

Finely dice the broccoli, celery, and red onion. Grill the bacon and dice. Mix broccoli, celery, onion and bacon with the chopped cashews and cranberries (or leave cashews and cranberries whole for a chunkier texture).

For the dressing, mix the mayonnaise, mustard, white vinegar and seasoning together, and add to the salad. You can serve straight away but it's best if the salad sits in the fridge for two or more hours, so that the dressing softens the broccoli. •

PENINSULA MEDICAL

Keeping you and your family safe

Same day GP appointments available!

Do you have a spot or mole or multiple that you want checked out? We can help! Peninsula Medical Centre has both Doctor and Nurse with expertise and specialist training in the area of Skin Cancers .

We can offer:
Skin Checks
Dermoscopy
Minor Surgery
Referral to
Specialists as
necessary



Call today to book an appointment with Tyronne or Trisha for an Initial Skin Check (using Dermoscopy)* fees may apply

**Welcoming
New
Patients**

FREE* CERVICAL SMEARS

**AT PENINSULA
MEDICAL
FOR WOMEN
20-70 YRS**



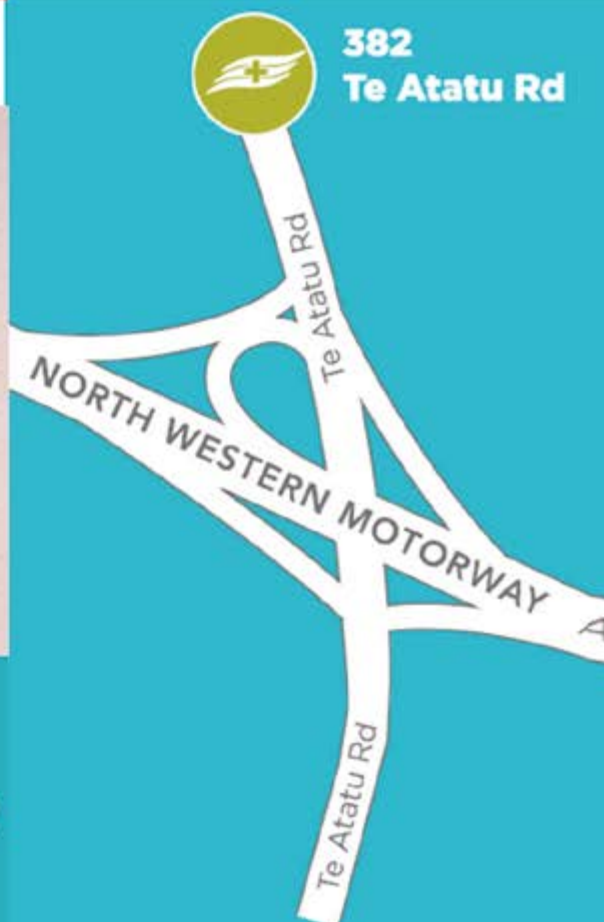
*Cervical Smear must be completed during this promotion period of 29 August - 30 September 2022. This applies to enrolled patients only.

**Continuing FREE Health Coaching:
Strategies to manage anxiety,
stress, financial hardship, grief, management
of medical conditions, dealing with new
diagnoses and much more!**



peninsula medical

**382
Te Atatu Rd**



Peninsula Medical Centre
382 Te Atatu Rd, Te Atatu Peninsula
www.peninsulamed.co.nz
Phone 09 834 6300

Two4Nine Gallery Re-opening Exhibition

Excitement is building among the artists exhibiting at Two4Nine Gallery, as they get ready for their post-covid, re-opening exhibition.

The gallery has opened its' doors again after a year of covid related disruption, and the artists in residence and community artists are now busy preparing for a special exhibition evening on October 7th, which will be open to the public.



▲ (From left) Suzanne Larmer, artists Josh Bryson, Rose Green, Ashley Phillips, and Danny Cope, with pottery tutor Steve Aitken.



Run by charitable trust A Supported Life, the gallery and studios at 249 Edmonton Road, Te Atatū South, support adults with intellectual disabilities in West Auckland, providing a hub of activities. The

range of programs offered include ceramics, photography, mosaics, painting, and textile art.

The trusts' Support and Development Leader, Suzanne Larmer says the gallery will have a range of ceramics, such as platters, jugs, bowls, and wall plaques. There will also be framed stitching pieces, paintings, photography, flax work and textile items, gift items such as jewellery, soaps, and candles will also be for sale.

Proceeds from the gallery go back to the artists, and are also used to purchase resources so that people with disabilities can create with many different art mediums and work on varied projects. The proceeds also keep the gallery space available for the community to enjoy and have access to the arts.

Suzanne says the gallery is all set up and ready to go for the opening exhibition which will have a late night timed to coincide with the Food Truck Friday evening, also planned for October 7th.

She says working with people with disabilities is the trusts' key focus, and her passion is to encourage people from our community to engage with people with disabilities and show them that

there are more similarities between us all, than differences.

"Art has been an amazing vehicle to be able to do that," she says. "It's been a really great experience for all involved".

"The gallery is our way of connecting with the local community and we are keen to connect with more local artists and exhibit them."

The gallery is open for the community Monday – Friday from 8:30am – 4:30pm, where the public can purchase hand-made gifts,

while supporting local artists.

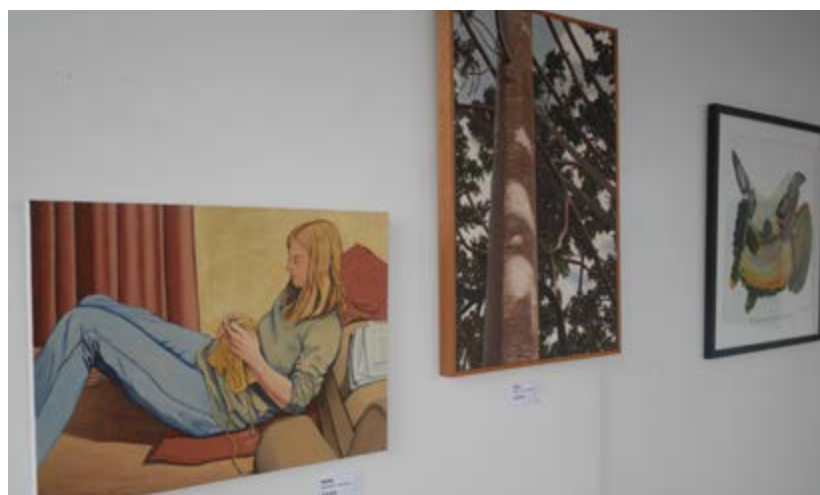
If you would like further information about the gallery for exhibiting or volunteering, see their facebook page: <https://www.facebook.com/Two4Nine> or contact them via email: suzanne@asupportedlife.co.nz or phone: 09 838 2969 •



▲ Artist Danny Cope



▲ Rose Green with her textile art



Tēnā koutou,
Fire and Emergency NZ hopes you are all enjoying the start of spring, keeping warm, well and fire safe? There have been some very chilly nights!

In the last 12 months there have been 105 heater fires and nine electric blanket fires.

Our advice is for everyone to observe the Metre Heater rule. Keep furniture, clothes and children at least one metre away from heaters and fireplaces.

Electric blankets should be placed flat on beds and we should make sure that controls and cords are not twisted or caught between the mattress and the base of the bed. At the first sign of wear electric blankets should be checked by a qualified electrician. By rolling your electric blankets loosely and nothing on top of them, should keep them in good shape for next year.

Do you know what to do if a fire starts in your home and you need to get out quickly?

Every house should have an escape plan. An escape plan tells you how to get out of the house if there's a fire. There is a great resource on our website, <https://fireandemergency.nz/kids-and-parents/>

Fire is extremely hot and fast. In a fire, there will be lots of smoke. This will make your house very dark. You might be asleep when the fire starts and get woken up by your smoke alarm. Also, everyone in your house needs to know where the safe meeting place is, should there be a fire. Remember, Get Down,

Get Low, Get Out and Stay Out.

This highlights the importance of having working smoke alarms. Please, check they are working by pressing the test button. Daylight savings is coming up, Sunday 25th September to be exact, that marks a good time to change your smoke alarm batteries. Fire and Emergency NZ recommends Long Life Photo Electric Smoke Alarms.

If you have any questions or queries about anything fire safety related, don't hesitate to call your local fire station (0800-3545-170).

Ngā manaakitanga tatou
Te Atatū Fire Station



He Waka Eke Noa

(Everyone in one canoe, no exceptions) •

Te Atatu has a new Community Constable.
Welcome to Senior Constable Carlo De Martin, who comes to us from his previous role as Ranui Community Constable.

Carlo was born and raised in West Auckland and has been a Police Officer for over 17 years. When he left Liston College, Carlo started working in light engineering followed by 17 and a half years with a jewellery firm before joining the Police in 2005. He says he was looking for a change and it filled all the requirements.

"I was looking for something rewarding, and exciting" he says, "where I was out and about and working with a variety of people in the community and this fitted the bill perfectly."

The Te Atatu Community Constable covers Te Atatu Peninsula, Te Atatu South and Glendene. The role focuses on sorting out neighbourly disputes, while ideally providing long-standing resolutions. The varied responsibilities can include traffic issues, offences like shop lifting and liaising with schools.

Carlo says this role has him working with businesses and the local business association, spreading the word on how they can look after their own and their staff's safety as well as looking at ways to prevent offending against their businesses.

"It is important to have a good rapport," says Carlo, "and for them to know that if they need to talk to me, they can."

Senior Constable Carlo De Martin
Te Atatu Community Constablen

cdx599@police.govt.nz •



TIRED OF THE CRIME IN YOUR COMMUNITY? WANT TO DO SOMETHING ABOUT IT?

'Be the eyes and ears of the Police'



- Need to pass a police vetting check
- Full training provided
- Work in a team
- Vehicle provided
- Better work stories

Want to know more:

E: cpnzteatatu@gmail.com

FB: Te Atatu/Glendene Community Patrol



HARVEYS

REAL
ESTATE
EST. 1918



**CONSIDERING
MAKING
A MOVE?**

WE'D LOVE TO HELP.

Whether selling or buying, our multi-award winning sales team will work closely with you to ensure your next property move is your best property move! Call us today to experience our industry leading levels of service and commitment to our most important client - you.

REWARD FOR REFERRAL

Refer family and friends to Harveys (Elysium Realty Limited), and when they list & sell with us we'll send you a \$500 Prezzy Card.

Business Directory

834 Barbers	2 Harbourview Rd	834 8704	Orient Bakery	560 Te Atatu Rd	834 8382
About Face	84 Gunner Dr	834 4018	Peninsula Bakehouse	548 Te Atatu Rd	834 0688
Absolute Plumbing and Gasfitting	6 Mickle Street	021 1372810	Peninsula Hair Ltd	574 Te Atatu Rd	834 5120
Allworkz Electrical Ltd	4 Holman Road	0508 ALLWORKZ	Peninsula Law	631 Te Atatu Rd	834 5389
Anytime Fitness	543 Te Atatu Rd	950 8540	Peninsula Medical Centre	382 Te Atatu Rd	834 6300
Ashton and Gray Hair Design	T6, 547 Te Atatu Road	835 2247	Peninsula Roast	572b Te Atatu Rd	834 0525
Barfoot and Thompson	534 Te Atatu Rd	834 3570	Peppermint Twist Icecream	607 Te Atatu Rd	834 9941
Battery Repack	80G Gunner Dr	834 7246	Pform.nz	TAP Community Centre	0800 736 766
Berlin Clothing Company	548 Te Atatu Rd	834 6470	Pita Pit Te Atatu	543 Te Atatu Rd	834 6058
Café Anatolia	543 Te Atatu Rd	834 7991	Pizza Landing	578c Te Atatu Rd	834 7492
CareVets	520 Te Atatu Rd	834 4430	Printmark	80G Gunner Dr	836 7246
Cassidy Eyecare	84 Gunner Dr	834 9070	Pucker and Wink Beauty Lounge	3/460 Old Te Atatu Road	21608380
Chil Body and Hair	84 Gunner Dr	834 4206	Radiant Nails and Beauty	571 Te Atatu Rd	214 7001
Chunky Chook	568 Te Atatu Rd	834-3638	Ray White-Buy West Realty Ltd	1 Rhone Ave	834 6789
Clearstone Legal	1/547 Te Atatu Rd	973 5102	Reds Traditional Barbershop	3a/571 Te Atatu Rd	973 4014
Computer Repairs	80G Gunner Dr	2108747216	Refill Nation	571 Te Atatu Rd	218 6849
Countdown Te Atatu	571 Te Atatu Rd	255 2420	Remedy Natural Helath	Suite 3, 552 Te Atatu Rd	0272 REMEDY
Dan and Anna Superette	568a Te Atatu Rd	834 6356	Restore Wellbeing	Suite 3, 552 Te Atatu Rd	600 1166
Demolition Deli	570b Te Atatu Rd	834 4698	Right Cuisine	543 Te Atatu Rd	838 8948
Dominos Te Atatu Peninsula	543 Te Atatu Rd	948 0744	Rodgers Reidy (NZ LTD) Insolvency	Lvl 1 547 Te Atatu Rd	834 2631
Dream Nail and Spa	538 Te Atatu Rd	834 4924	Sam's Roast	1/570 Te Atatu Rd	834 6638
Emperor Motors	4a Harbourview Rd	834 8649	SBA (Small Business Accounting)	611 Te Atatu Rd	834 0584
Et Tu Bistro	532 Te Atatu Rd	834 5327	SD Bakery and Café	572 Te Atatu Rd	834 3278
Fresh Beer Brew Company	532 Te Atatu Rd	950 5110	Shahi Dawat Restaurant	547 Te Atatu Rd	834 1239
Fuze Café	566 Te Atatu Rd	834 8536	Spynedoctors chiropractic	80 h Gunner Drive	0800 SPYNED
G4U Dollar Store	556 Te Atatu Rd	880 4321	Stitches Alterations	607 Te Atatu Rd	834 4688
GM Legal	3/1-3 Rhone Ave	839 4000	Supa Fruit Mart	3/1 Rhone Ave	834 2473
Go Bananas Childcare Te Atatu	543 Te Atatu Rd	0800 462 626	Sushi Ami	5/80 Gunner Dr	834 0010
Gold Star Takeaway	564 Te Atatu Rd	834 8838	Sushi and Bento	546b Te Atatu Rd	834 1060
Golden Key Takeaways	546c Te Atatu Rd	834 6690	Tank	543 Te Atatu Rd	834 0200
Golden Touch Barber	3/538 te atatu Road	020 4093 7797	Tass Print	534 Te Atatu Rd	834 6338
Greens	572 Te Atatu Rd	834 6176	Te Atatu Butcher	1/1-3 Rhone Ave	834 5158
Haddad Takeaways	538 Te Atatu Rd	834 6429	Te Atatu Chiropractic	550a Te Atatu Rd	834 0440
Hammer Hardware	568a Te Atatu Rd	834 6210	Te Atatu Discount Superette	542 Te Atatu Rd	834 2089
Happy Island Variety Store	552 Te Atatu Rd	027 3058016	Te Atatu Engraving & Gifts	562 Te Atatu Rd	834 6143
Harcourts Te Atatu	568a Te Atatu Rd	839 1333	Te Atatu Fisheries	613 Te Atatu Rd	834 6998
Harveys Real Estate	530 Te Atatu Rd	834 6155	Te Atatu Health	544b Te Atatu Rd	900 11 11
Highwire Electrical Ltd	2 Waikura Dr	027 244 9473	Te Atatu Memorial RSA	1 Harbourview Rd	834 3698
Hohepa Chartered Accountants	42 Spinnaker Dr	834 3712	Te Atatu Peninsula Laundry	3/570 Te Atatu Rd	027 2338908
Hospice Op Shop	568 Te Atatu Rd	834 1291	Te Atatu Union Church and Op Shop	2 Taikata Rd	834 3228
Jenny Craig	84 Gunner Dr	834 8924	Team Gopal - Creative Mortgages	1 Rhone Avenue	021 666 490
Jayde Marie Lashes	4/556 Te Atatu Rd	021 060 3551	Thai Flavour	572a Te Atatu Rd	834 0646
John Chan Takeaways	578b Te Atatu Rd	834 5246	The Delicious Bistro	547 Te Atatu Rd	834 6635
K&A Bargains	542a Te Atatu Rd	834 8986	The Great Scott Company	107 Tiroroa Ave	021 555 388
Khawhom Thai Restaurant	80 Gunner Drive	834 9998	The Green Florist	540 Te Atatu Rd	2000 552
KJ Nally Barristers and Solicitors	534 Te Atatu Rd	834 9995	The Property Market	571 Te Atatu Rd	965 3656
L.A. Fire Systems Ltd	550b Te Atatu Rd	834 0346	The Sugar Grill	571 Te Atatu Rd	834 0333
Loader Legal	93 Bordeaux Parade	360 0436	Three Monkeys Tattuo	84 Gunner Dr	834 4206
Loaves and Fishes Catering	570 Te Atatu Rd	817 2285	Top Well Bakery	3/82 Gunner Dr	834 2328
McDonald's Te Atatu	543 Te Atatu Rd	215 5542	Uneek Cutz	6/547 Te Atatu Rd	834 0100
Mi Physio	84 gunner Drive	264 0105	Unichem Peninsula Pharmacy	550 Te Atatu Rd	834 6303
Mr Illingsworth	571 Te Atatu Rd	953 4377	Village Wines	571 Te Atatu Rd	834 7825
Mortgage Supply	3/1 Rhone Ave	834 8682	Vivo Hair and Beauty	546A Te Atatu Rd	834 6020
My Laundry	3/570 Te Atatu Rd	021 022 92894	Waitakere Foot Podiatry	84 Gunner Drive	834 0198
Newdays Espresso	578a Te Atatu Rd	834 8883	Waves Laundromat	Unit 2 543 Te Atatu Rs	c/-834 6058
Noodle Canteen	554 Te Atatu Rd	834 1328	West Auckland Counselling	552 Te Atatu Rd	274395957
NZ Home Loans	28 Vera Road	027 2056393	Wildflours Cakery and Coffee	6/80 Gunner Dr	2041155245
Odessa's Mini Mart	615 Te Atatu Rd	834 2544	Wine Villa	544a Te Atatu Rd	834 4992
Opal Dental	518 Te Atatu Rd	834 6359			